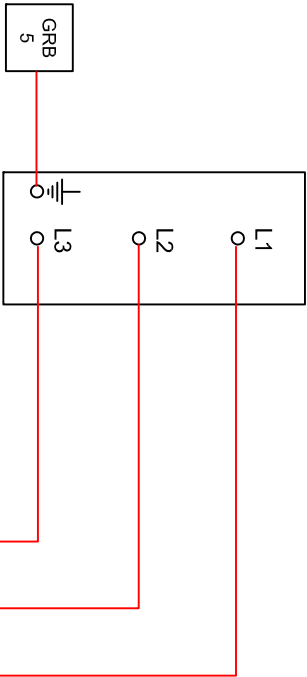
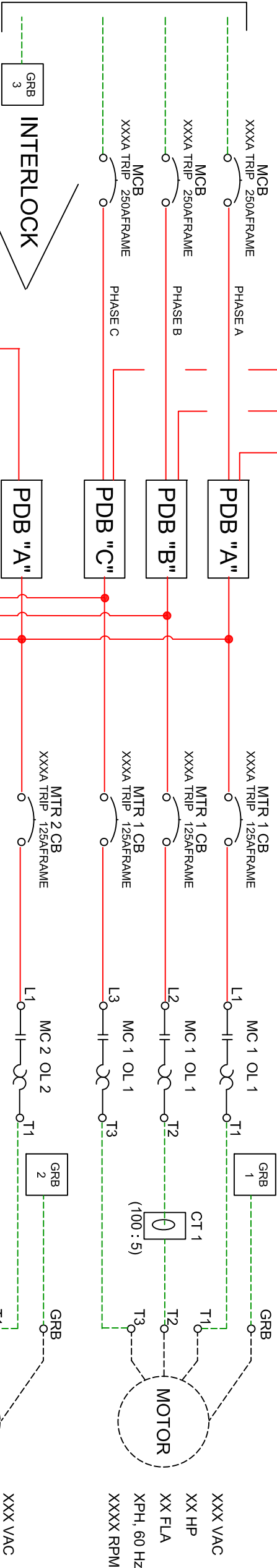


SPD-1

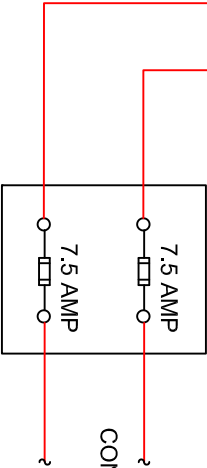
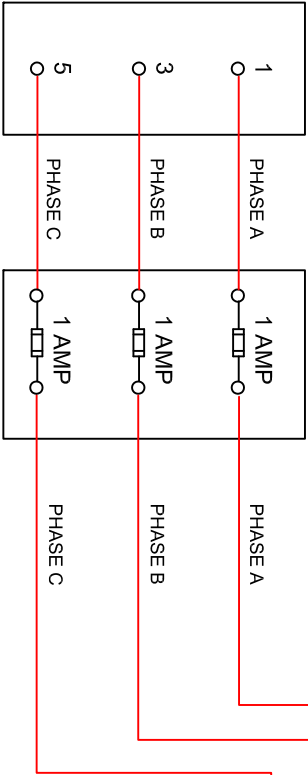
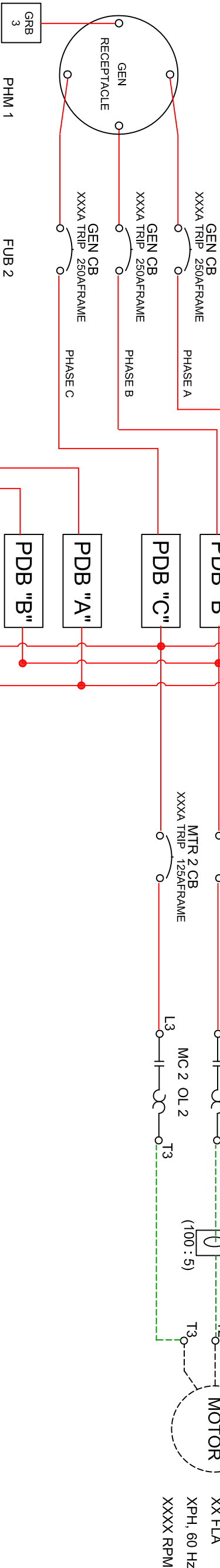


- NOTES:
1. FOR OTHER VOLTAGE CONFIGURATIONS, REFER TO MANUFACTURERS WIRING INSTRUCTIONS. CONTROL POWER TRANSFORMER SHALL BE PROPERLY SIZED FOR APPLICATION. A MINIMUM OF 2000 VA SHALL BE PROVIDED AND MOUNTED EXTERNALLY. REFER TO FRONT ELEVATION AND BILL OF MATERIALS FOR SPECIFIED LOCATION AND SPECIFICATION OF TRANSFORMER.
 2. MOTOR CONTROL WIRING LIMITED TO A MAXIMUM OF:
15 HP @ 230 VOLTS
25 HP @ 460 VOLTS

208VAC
THRU
480VAC
3
PHASE



INTERLOCK



CONTINUED ON DRAWING 207, LINE 700

SCALE: N.T.S.	-	REVISIONS AS PER MEETING	JG
DESIGN: JAG / LS			
DRAWN BY: JG			
APPROVED BY: WW	NO	REVISION	DATE BY

WASTEWATER DIVISION,
INDUSTRIAL AUTOMATION GROUP

CITY OF
ORLANDO, FLORIDA

LIFT STATIONS STANDARDS
< 25 HP NEMA STARTER
DUPLEX PCP FOR PORTABLE GENERATOR
ONE LINE WIRING SCHEMATIC